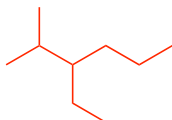


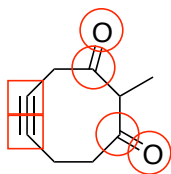
Quiz 1. Friday Morning.

Name:

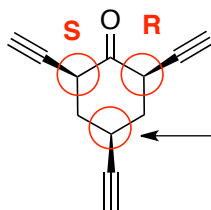
1) Draw 3-ethyl-2-methylhexane using line angle notation (3 pts)



2) For the following molecule, put a circle around every  $sp^2$  hybridized atom, and a square around every  $sp$  hybridized atom. (3 pts)



3) Circle all the stereocenters in the following molecule and assign them as (R) or (S). (4 points)



Technically a stereocenter, but you haven't learned how to name R or S. Ignore